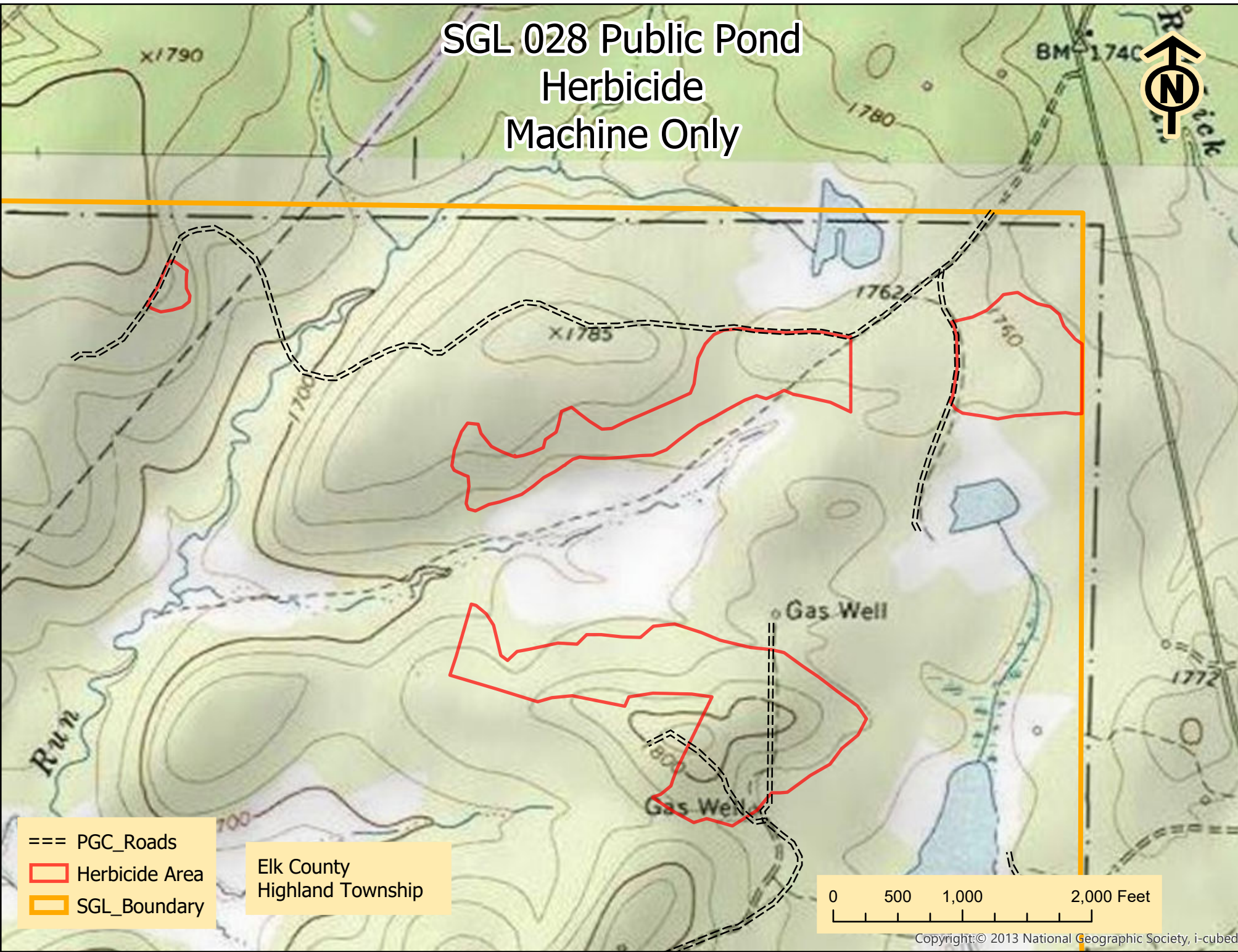
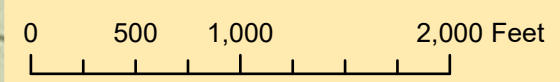


# SGL 028 Public Pond Herbicide Machine Only

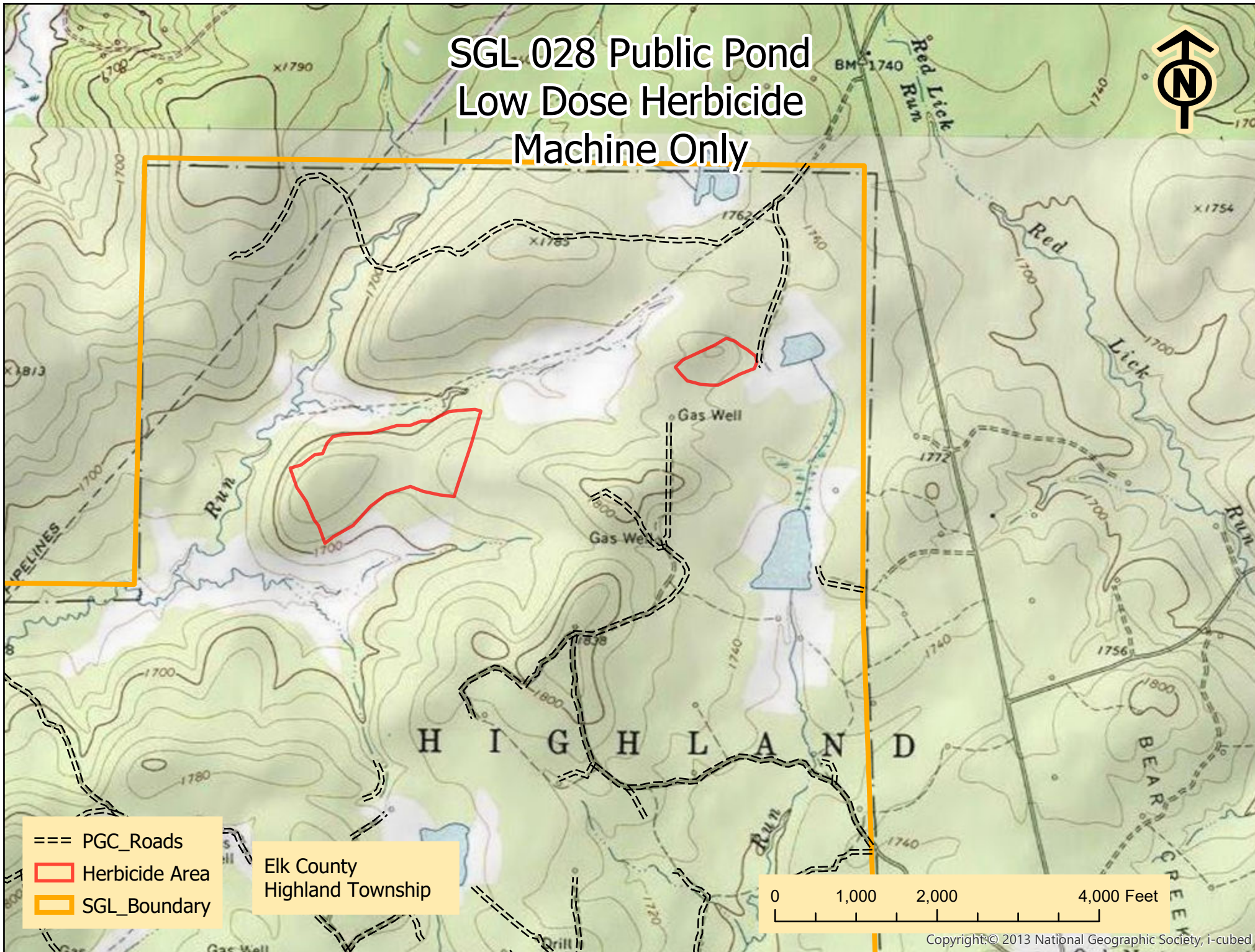


- === PGC\_Roads
- ▭ Herbicide Area
- ▭ SGL\_Boundary

Elk County  
Highland Township

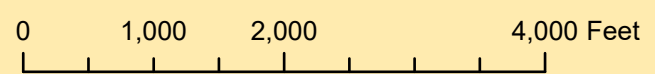


# SGL 028 Public Pond Low Dose Herbicide Machine Only

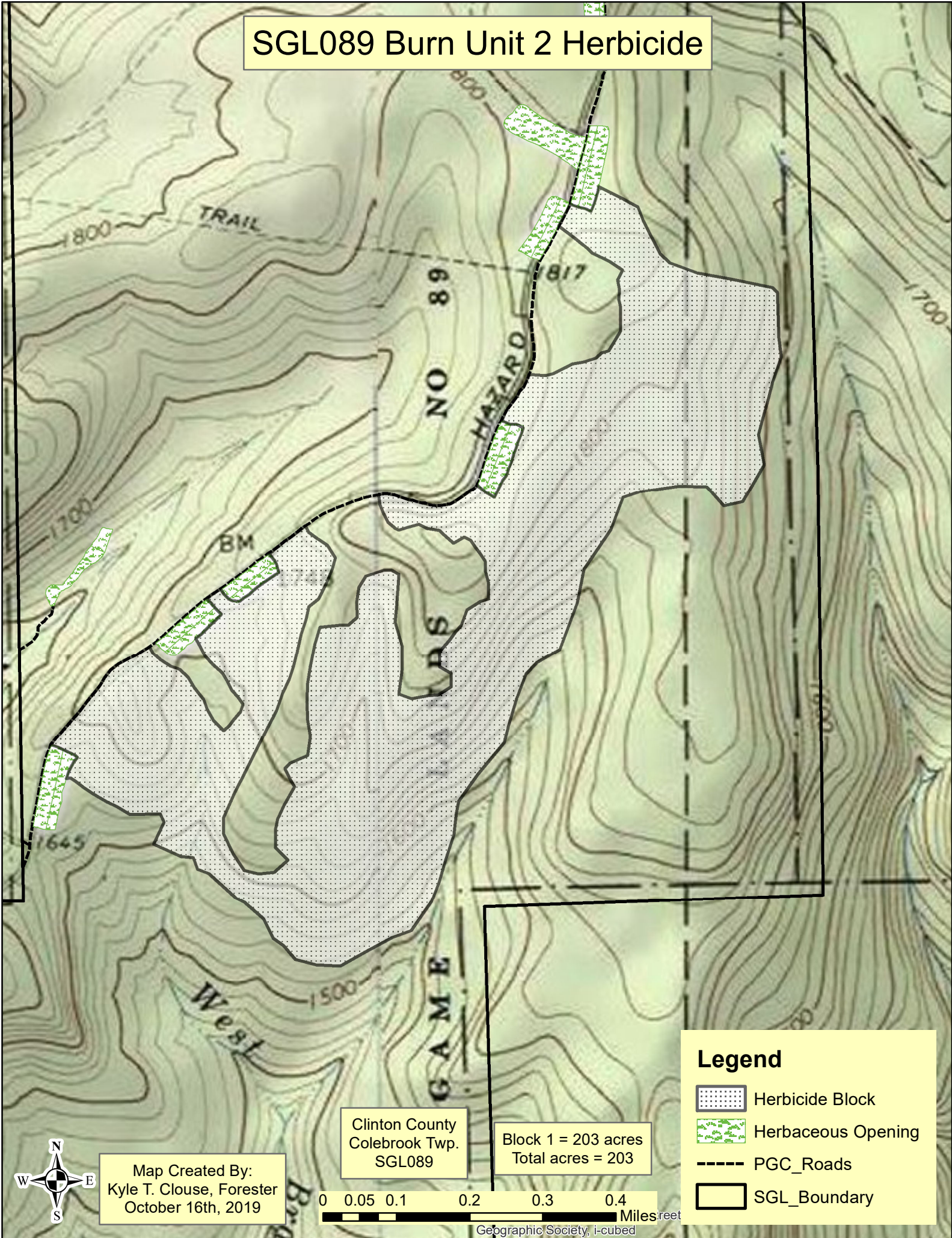


- === PGC\_Roads
- Red Polygon Herbicide Area
- Orange Polygon SGL\_Boundary

Elk County  
Highland Township



# SGL089 Burn Unit 2 Herbicide



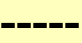
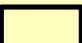


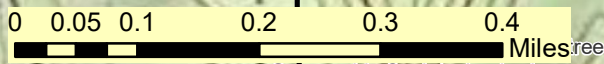
Map Created By:  
Kyle T. Clouse, Forester  
October 16th, 2019

Clinton County  
Colebrook Twp.  
SGL089

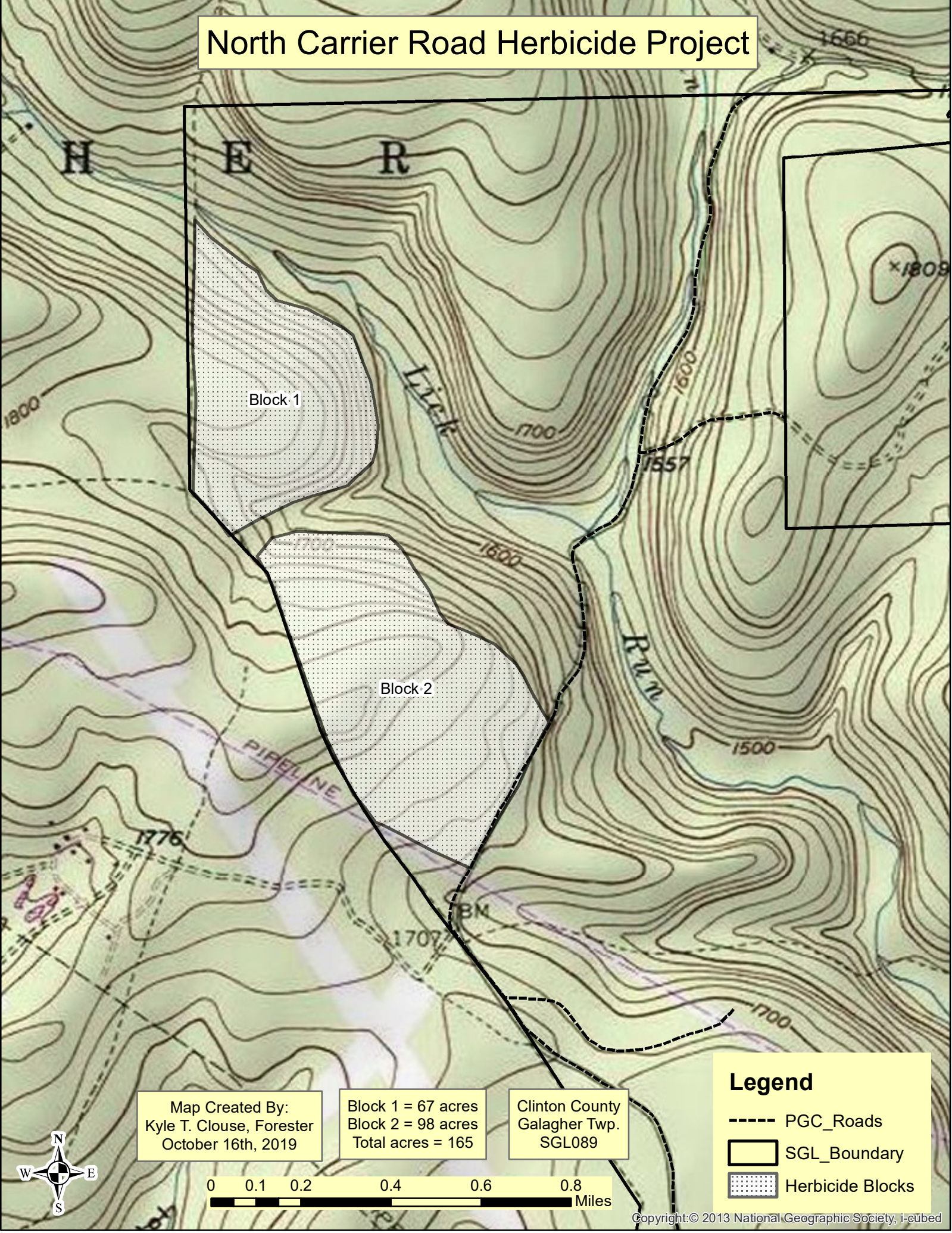
Block 1 = 203 acres  
Total acres = 203

### Legend

-  Herbicide Block
-  Herbaceous Opening
-  PGC\_Roads
-  SGL\_Boundary



# North Carrier Road Herbicide Project



Block 1

Block 2

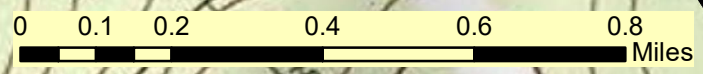
Map Created By:  
Kyle T. Clouse, Forester  
October 16th, 2019

Block 1 = 67 acres  
Block 2 = 98 acres  
Total acres = 165

Clinton County  
Galagher Twp.  
SGL089

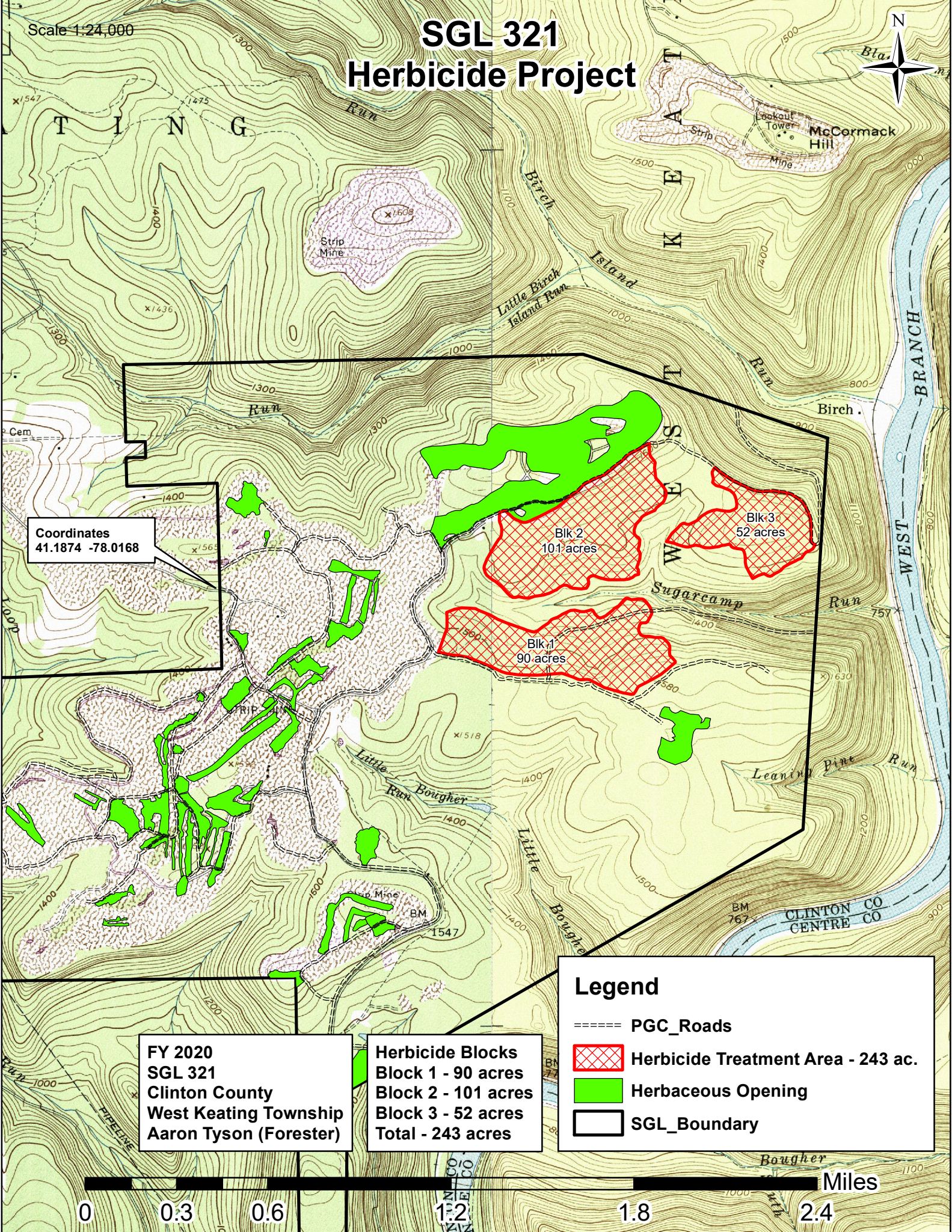
**Legend**

- PGC\_Roads
- SGL\_Boundary
- ▨ Herbicide Blocks



# SGL 321 Herbicide Project

Scale 1:24,000



Coordinates  
41.1874 -78.0168

FY 2020  
SGL 321  
Clinton County  
West Keating Township  
Aaron Tyson (Forester)

Herbicide Blocks  
Block 1 - 90 acres  
Block 2 - 101 acres  
Block 3 - 52 acres  
Total - 243 acres

**Legend**

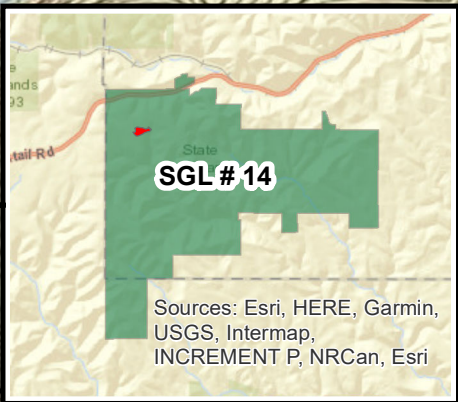
- PGC\_Roads
- Herbicide Treatment Area - 243 ac.
- Herbaceous Opening
- SGL\_Boundary



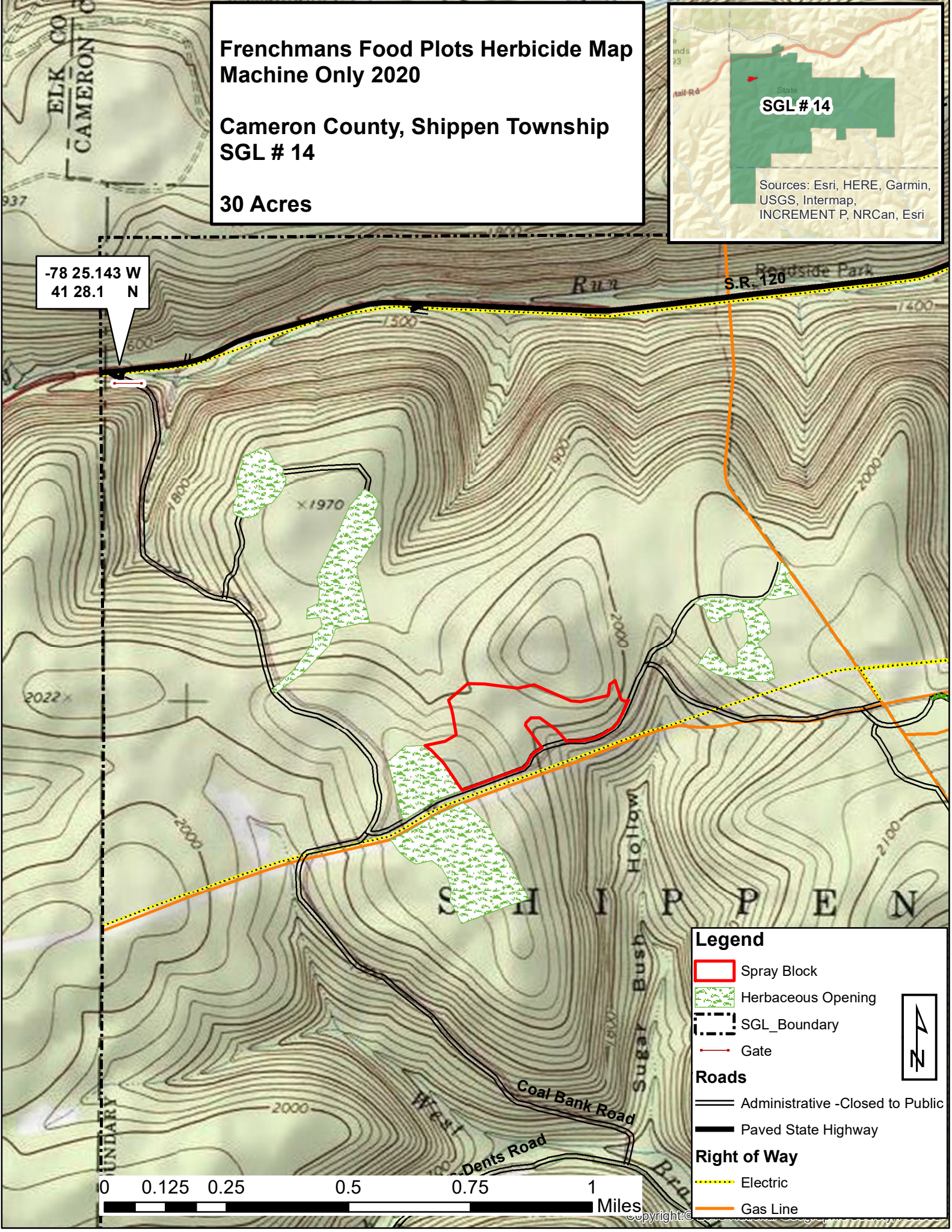
# Frenchmans Food Plots Herbicide Map Machine Only 2020

Cameron County, Shippen Township  
SGL # 14

30 Acres



-78 25.143 W  
41 28.1 N



**Legend**

- Spray Block
- Herbaceous Opening
- SGL\_Boundary
- Gate

**Roads**

- Administrative -Closed to Public
- Paved State Highway

**Right of Way**

- Electric
- Gas Line

